

CS 520i | Black & White Multifunctional System

DOCUMENT IMAGING WITH CONFIDENCE.



# Copystar CS 520i MFP:

The Copystar CS 520i Black & White Multifunctional System delivers the performance, versatility and ultra-reliability you need. Its high output speed, unique long life technology and innovative features, such as full color scanning and USB host interface, make it a powerful member of the HyPAS, Kyocera's unique, powerful and scalable software solutions platform. HyPAS delivers a broad range of options that enable you to meet your business needs. With its sleek design, proven reliability and superior engineering, the CS 520i provides the exceptional performance and functionality that you demand.

## RELIABILITY AT ITS BEST

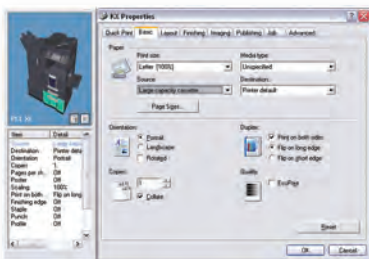
Built on one of the most reliable engines the industry has ever known, the CS 520i delivers an exceptional black & white MFP engineered for high performance for your workplace, where it matters most.

- Innovative technology extends Copystar's **long life consumables**, reducing the frequency to replace major components
- **Industry-leading preventive maintenance intervals** reduce the overall frequency of service calls and maximize uptime
- The CS 520i incorporates Kyocera's patented **Amorphous Silicon drum technology, with a rated yield of 500,000 pages** for a durable imaging system day-in and day-out
- **High maximum monthly volume** set at 200,000 pages ensures work environments can efficiently meet critical demands and deadlines

Your business is your top priority and you demand uncompromising dependability across your entire enterprise. The CS 520i delivers a winning solution for all your critical document imaging requirements. *It's ultra-reliability at its best!*

## POWER AT THE DEVICE AND AT THE DESKTOP

Our advanced **KX Driver** allows users to access the unique features integrated into each TASKalfa MFP from one common print driver.



## Fast Dual Scan Document Processor

At less than one second per page, its dual scan capability dramatically improves your productivity and handles mixed originals with ease for a powerful scanning solution in both full color and black & white.

## Advanced Finishing

This robust 3,000 sheet finisher supports multi-position stapling, with options including 2/3 hole punch, multi-tray, and booklet folding for advanced finishing needs in-house.

## Maximum Productivity

A standard 2 GB of RAM and 160 GB Hard Disk Drive maximize your document processing and ensure all of your output requirements are handled quickly and efficiently.

## Professional Booklet Folding

Fold and saddle stitch booklets, up to 16 individual sheets from letter, legal and ledger sizes, for professional looking black & white output every time.



## FLEXIBILITY TO GROW WITH YOUR BUSINESS



### Reversing Automatic Document Processor

- 100 Sheet Reversing Automatic Document Processor with Scan
- Speeds up to 75 ipm



### Optional 1,000 Sheet Finisher

- Multi-Position Staple
- Document Sorting
- 16 lb – 34 lb Bond

# Reliability, Performance, Flexibility

...demand from a document imaging system, all in a bold, sleek design. A powerful combination of a fast and efficient 52 ppm make the CS 520i essential to all your document imaging tasks. The CS 520i's performance can be further optimized with the CS 520i to seamlessly integrate with widely accepted software applications and operate in virtually any business environment. It makes a difference, day-in and day-out. That's the Copystar CS 520i.



## Wide 8.5" Color Touch Screen Control Panel

The user-friendly color touch screen control panel provides robust document handling and ease of use at your fingertips.

## "On-board Document Storage"

Create a simple way for you to store, secure and access critical documents at the device through Copystar's unique on-board Document Box.

## Advanced USB Host Interface

Conveniently print-from (black & white) and scan-to (color or black & white) any USB drive right from the touch screen control panel in PDF, JPEG, TIFF and XPS file formats.

## Versatile Multi-Purpose Tray

A standard 200 sheet multi-purpose tray (MPT) can handle various media types, from statement to ledger, and up to 110 lb Index for your special jobs such as covers and inserts.

## Expansive Paper Capacity

For paper intensive environments, you can add the optional 3,000 sheet large capacity tray to boost your maximum paper supply to an impressive 4,200 sheets.

## HIGH END PERFORMANCE & DESIGN

- **Color Scanning.** With resolutions of up to 600 x 600 dpi and multiple file formats supported including PDF, JPEG, TIFF and XPS, your color scanned documents will remain true to the original.
- **High Capacity Toner.** The CS 520i utilizes a high capacity toner, eliminating the need for frequent replacement. At an impressive yield of 34,000 pages (based on 6% coverage), your business will realize the highest in performance standards.
- **Long Preventive Maintenance Intervals.** At an incredible 500,000 pages, the CS 520i delivers one of the highest preventive maintenance intervals in the industry, reducing any downtime or loss of productivity due to routine maintenance and care.
- **HyPAS.** Our Hybrid Platform for Advanced Solutions, or HyPAS, will allow your business to further optimize the CS 520i with powerful integrated solutions designed to boost your business activities. HyPAS delivers a broad range of options that enable the CS 520i to seamlessly integrate with widely accepted software applications and operate in virtually any environment.

# HyPAS™

## BUSINESS DEMANDS



### 7 Bin Mailbox for 3,000 Sheet Finisher

- Output Sorting – Up to 7 Individual Mailboxes
- 16 lb Bond – 90 lb Index



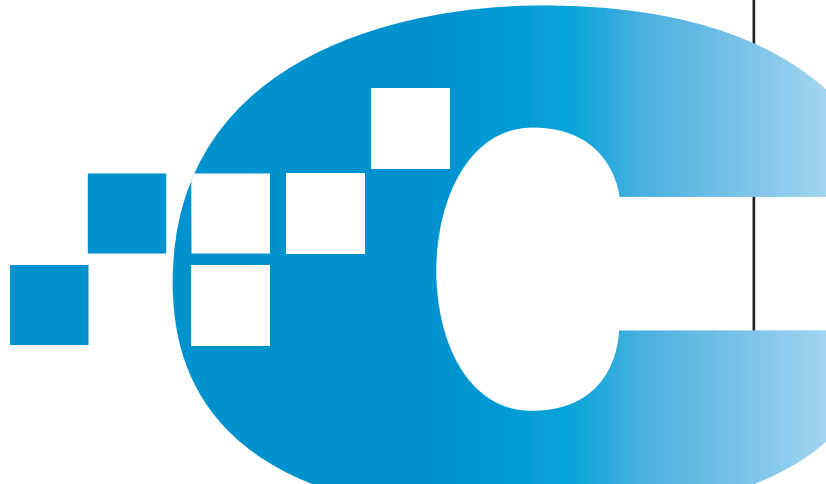
### Dual 500 Sheet Paper Trays

- Statement to Ledger Sized Sheets
- 16 lb – 90 lb Bond



### Optional Fax / Network Fax

- Add Up to Two G3 Fax Systems
- Internet Fax Kit Available



# CS 520i



Shown with Optional DSDP, 500 x 2 Tray, and 3,000 Sheet Finisher  
50.7" W x 25.5" D x 48.9" H



Shown with Optional DSDP, 500 x 2 Tray, and 1,000 Sheet Finisher  
48.6" W x 25.5" D x 48.9" H



Shown with Optional DSDP and 3,000 Sheet LCT  
23.6" W x 25.5" D x 48.9" H



Color Touch Screen Control Panel  
Screen Dimensions: 8.5 inches

## HyPAS™

Hybrid Platform for Advanced Solutions

### Basic Specifications

Configuration	Black & White Multifunctional Systems - Print/Scan/Copy/Optional Fax
Pages Per Minute	Letter: 52 ppm / Legal: 26 ppm / Ledger: 26 ppm
Warm-up Time	30 Seconds or Less
First Copy / Print Out Time	3.9 Seconds / 4.8 Seconds
Resolution	600 x 600 dpi
Memory / Hard Disk Drive	2 GB RAM / 160 GB HDD
Duplex	Standard Stackless, Statement to Ledger, 16 - 20 lb Bond
Electrical Requirements / Weight	120V, 60Hz, 12A / 187.4 lbs (mainframe only)
Maximum Monthly Volume	200,000 Pages Per Month

### Paper Supply

Standard Paper Sources	Dual 500 Sheet Drawers, 200 Sheet MPT; Auto Selection / Switching, Add Paper While Running
Optional Paper Sources	500 x 2 Dual Paper Drawers <b>PF-720(B)</b> ; 3,000 Sheet Large Capacity Tray <b>PF-760(B)</b>
Paper Capacity	Standard: 1,200 Sheets; Maximum: 4,200 Sheets
Paper Size	5.5" x 8.5" - 11" x 17"
Paper Weight	Standard Trays, PF-760(B): 16 - 28 lb Bond; MPT: 12 lb Bond - 110 lb Index; PF-720(B): 16 lb Bond - 90 lb Index
Input Materials	Bond Paper, Recycled Paper, Transparencies, Cardstock, Envelopes

### Printer Specifications

Controller	PowerPC 750FL / 600MHz
PDLs/Emulations	PRESCRIBE, PCL6 (5e, XL), KPDL3 (PS3)
Fonts	136 KPDL3, 93 PCL6, 8 Windows Vista, 1 Bitmap
Windows OS Compatibility	Windows 2000/XP/2003/Vista/2008/Windows 7
Novell OS Compatibility	Novell NetWare 3.x/4.x/5.x/6.x
Mac OS Compatibility	Mac OS 10.x
UNIX OS Compatibility	Sun OS 4.1.x; Solaris 2.x; AIX; HP-UX 9(LPR)
Interfaces	Standard: 10/100BaseTX, Hi-Speed USB 2.0, USB Host Interface, 2 Expansion Slots
Network Print and Supported Protocols	TCP/IP (IPv4, IPv6, IPsec, SSL, HTTPS), IPX/SPX, AppleTalk, NetBEUI
Drivers	KX Driver, Mini Driver, KX Driver for XPS, XPS Mini Driver, Network Fax Driver, PPD for Mac
Utilities	PDF Direct Print, KMnet Admin, KMnet for Accounting, KMnet Viewer

### Scan Specifications

Scan Resolutions	200, 300, 400, 600 dpi
File Formats	Black: PDF, TIFF; Color: PDF, JPEG, TIFF, XPS
PDF Extension	High Compression PDF, Encrypted PDF
Connectivity / Supported Protocols	10/100BaseTX / TCP/IP
Scanning Functions	Scan to SMB, Scan to e-Mail, Scan to FTP, Scan to USB, WSD Scan, TWAIN Scan

### Copy Specifications

Image Mode	Text, Photo, Text/Photo, Auto, Manual, Map
Continuous Copy	1 - 999 / Auto Reset to 1
Additional Features	Positive/Negative Reverse, Mirror Image, Rotate Copy, Border Erase, Split Copy, Electronic Sort, Margin Shift
Job Management	Job Interrupt, Job Build, 10 Job Programs, Repeat Copy, 1,000 Department Codes
Magnification / Zoom	Full Size, 5 Reduction, 5 Enlargement Preset Ratios, 25 - 400% in 1 step increments, XY Zoom
Document Box	Custom Box, Job Box, Removable Memory Box, Fax Box (with optional Fax System)

### Fax Specifications

Fax / Network Fax Option	Fax System(S) / Internet Fax Kit(A) (requires Fax System(S))
Compatibility	Super G3 Fax
Fax Memory	Standard: 12 MB; Maximum: 120 MB
Fax Functions	Duplex TX/RX, Confidential RX/TX, F-Code RX/TX, Broadcasting, Fax Box, Fax Block, Dual Fax

### Optional Document Processors DP-760(B) or DP-750(B)

Type / Capacity	<b>DP-760(B)</b> Dual Scan Document Processor / 100 Sheets <b>DP-750(B)</b> Reversing Automatic Document Processor / 100 Sheets
DSDP Scan Speed DP-760(B)	Simplex: 75 ipm / Duplex: 100 ipm (300 dpi)
RADF Scan Speed DP-750(B)	Simplex: 75 ipm / Duplex: 45 ipm (300 dpi)
Acceptable Originals/Weights	5.5" x 8.5" - 11" x 17", Mixed Size Originals / 9 - 42 lb Bond

### Optional 3,000 Sheet Finisher DF-760(B)

Stack / Staple Capacity	Main Tray: 3,000 Sheets; Sub Tray(B): 200 Sheets; Sub Tray(C): 50 Sheets
Paper Size	Main Tray: 8.5" x 11" - 11" x 17"; Sub Tray(B): 5.5" x 8.5" - 11" x 17"; Sub Tray(C): 8.5" x 11"
Paper Weight	Main Tray: 16 lb Bond - 90 lb Index Duplex; 16 lb Bond - 110 lb Index Simplex; Sub Tray (B/C): 12 lb Bond - 90 lb Index
Edge Staple Position	3 Positions: Top Left, Bottom Left, Center Bind
Optional Multi-Bin Mailbox	<b>MT-720(B)</b> Includes 7 Trays; Supports 16 lb Bond - 90 lb Index Stack Capacity per Bin: 100 Sheets: 5.5" x 8.5", 8.5" x 11"; 50 Sheets: 8.5" x 14", 11" x 17"
Optional Punch	<b>PH-5A</b> 2 and 3 Hole Punch Unit, Supports 8.5" x 11" - 11" x 17", 16 - 110 lb Index
Optional Saddle Stitch / Fold	<b>BF-720</b> Supports 8.5" x 11", 8.5" x 14", 11" x 17", 16 lb Bond - 110 lb Index; Over 24 lb Bond Single Sheet

### Optional 1,000 Sheet Finisher DF-780(B)

Stack / Staple Capacity	1,000 Sheets / 50 Sheets: 8.5" x 11"; 25 Sheets: 8.5" x 14", 11" x 17"
Paper Size / Weight	8.5" x 11" - 11" x 17" / 16 - 34 lb Bond
Edge Staple Position	3 Positions: Top Left, Bottom Left, 2 Point Long Edge

### Optional Internal Finisher DF-720(B)

Stack/Staple Capacity	500 Sheets / 30 Sheets: 8.5" x 11"; 20 Sheets: 8.5" x 14", 11" x 17"
Paper Size / Weight	8.5" x 11" - 11" x 17" / 16 - 21 lb Bond
Edge Staple Position	1 Position

### Additional Options

KYOcapture, KYOcapture Express, Fax Memory, Platen Cover, Job Separator JS-700(B), Attachment Kit AK-700, Stand, Data Security Kit (E) - Security Overwrite and Encryption for Print/Copy/Scan, Printed Document Guard Kit (A)
--

Specifications and design are subject to change without notice.  
For the latest on connectivity visit [www.copystar.com](http://www.copystar.com).  
All trademarks are the property of their respective owners.

Kyocera Mita America, Inc. Headquarters: 225 Sand Road, Fairfield, NJ 07004-0008, USA  
©2009 Kyocera Mita America, Inc.  
IC# 855D400247

