

CS 420i | Black & White Multifunctional System

DOCUMENT IMAGING WITH CONFIDENCE.



Copystar CS 420i MFP:

The Copystar CS 420i Black & White Multifunctional System delivers the productivity, flexibility and ultra-reliability unique long life technology and a robust array of features, such as full color scanning and USB print-from and scan-to functionality. Maximize your imaging requirements, the HyPAS-enabled CS 420i seamlessly integrates with widely accepted software applications and open standards. It will revolutionize your office environment. That's the Copystar CS 420i.

RELIABILITY AT ITS BEST

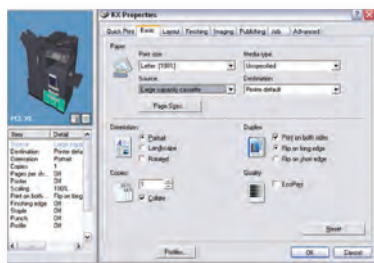
Built on one of the most reliable engines the industry has ever known, the CS 420i delivers an exceptional black & white MFP engineered for high performance for your workplace, where it matters most.

- Innovative technology extends Copystar's **long life consumables**, reducing the frequency to replace major components
- **Industry-leading preventive maintenance intervals** reduce the overall frequency of service calls and maximize uptime
- The CS 420i incorporates Kyocera's patented **Amorphous Silicon drum technology, with a rated yield of 500,000 pages** for a durable imaging system day-in and day-out
- **High maximum monthly volume** set at 150,000 pages ensures work environments can efficiently meet critical demands and deadlines

Your business is your top priority and you demand uncompromising dependability across your entire enterprise. The CS 420i delivers a winning solution for all your critical document imaging requirements. *It's ultra-reliability at its best!*

POWER AT THE DEVICE AND AT THE DESKTOP

Our advanced **KX Driver** allows users to access the unique features integrated into each Copystar MFP from one common print driver.



Fast Dual Scan Document Processor

At less than one second per page, its dual scan capability dramatically improves your productivity and handles mixed originals with ease for a powerful scanning solution in both full color and black & white.

Efficient Duplex

Standard duplex helps your business meet company and ecological initiatives and reduce paper consumption by producing 2-sided originals in a fast, efficient manner.

Exceptional Print Performance

Utilizing a fast and efficient CPU, multiple PDLs and robust memory specifications, the CS 420i will deliver the high quality print output you expect.

Superior Finishing

This impressive 1,000 sheet finisher supports multi-position stapling, document sorting, and handles a variety of paper weights and sizes for all of your evolving finishing needs.

Device Management

Unique tools such as KMnet Viewer and PrintQ Manager allow IT administrators to proactively manage and control the day-to-day usage and access of the CS 420i.



FLEXIBILITY TO GROW WITH YOUR BUSINESS



Reversing Automatic Document Processor

- 100 Sheet Reversing Automatic Document Processor with Scan
- Speeds up to 75 ipm



Optional 3,000 Sheet Finisher

- Multi-Position Staple
- Optional 2 and 3 Hole Punch
- 16 lb Bond - 110 lb Index



7 Bin Mailbox for 3,000 Sheet Finisher

- Output Sorting - Up to 7 Individual Mailboxes
- 16 lb Bond - 90 lb Index

Reliability, Performance, Flexibility

Reliability that your business requires, all in a bold, black and silver design. At an impressive 42 ppm, the CS 420i combines optimized performance with HyPAS, Kyocera's powerful and scalable software solutions platform. Designed to meet your specific document requirements in virtually any business environment. Engineered with innovative product features and proven reliability, the CS 420i



"On-board Document Storage"

Create a simple way for you to store, secure and access critical documents at the device through Copystar's unique on-board Document Box.

Advanced USB Host Interface

Conveniently print-from (black & white) and scan-to (color or black & white) any USB drive right from the touch screen control panel in PDF, JPEG, TIFF and XPS file formats.

Section 508 Compliance

To meet the accessibility needs of individuals with disabilities, the CS 420i is equipped with an array of features including a large, easy-to-view color display, an adjustable control panel, visual and audible alerts, and easy-to-access paper drawers and decks.

Versatile Paper Handling

With options including a 3,000 sheet LCT for maximum paper capacity or dual 500 sheet paper drawers to maximize the number of available sources, the standard 1,200 sheet paper capacity can be dramatically enhanced depending on your business requirements.

HIGH END PERFORMANCE & DESIGN

- **Color Scanning.** With resolutions of up to 600 x 600 dpi and multiple file formats supported including PDF, JPEG, TIFF and XPS, your color scanned documents will remain true to the original.
- **High Capacity Toner.** The CS 420i utilizes a high capacity toner, eliminating the need for frequent replacement. At an impressive yield of 34,000 pages (based on 6% coverage), your business will realize the highest in performance standards.
- **Long Preventive Maintenance Intervals.** At an incredible 500,000 pages, the CS 420i delivers one of the highest preventive maintenance intervals in the industry, reducing any downtime or loss of productivity due to routine maintenance and care.
- **HyPAS.** Our Hybrid Platform for Advanced Solutions, or HyPAS, will allow your business to further optimize the CS 420i with powerful integrated solutions designed to boost your business activities. HyPAS delivers a broad range of options that enable the CS 420i to seamlessly integrate with widely accepted software applications and operate in virtually any environment.

HyPAS™

BUSINESS DEMANDS



Optional Booklet Folder for 3,000 Sheet Finisher

- Folding up to 16 Sheets
- Saddle Stitch
- Letter, Legal, or Ledger Sized Booklets
- 16 lb Bond – 110 lb Index



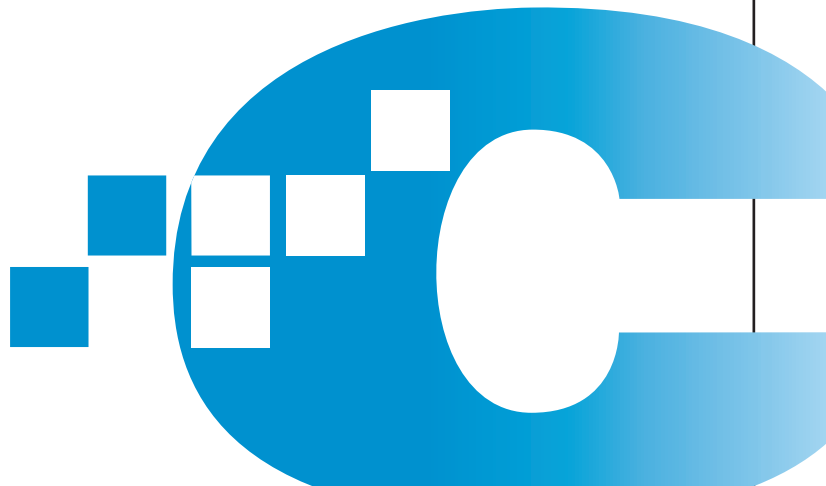
3,000 Sheet Large Capacity Tray

- Letter Sized Sheets
- 16 – 28 lb Bond



Optional Fax / Network Fax

- Add Up to Two G3 Fax Systems
- Internet Fax Kit Available



CS 420i



Shown with Optional DSDP, 500 x 2 Tray, and 3,000 Sheet Finisher
50.7" W x 25.5" D x 48.9" H



Shown with Optional DSDP, 500 x 2 Tray, and 1,000 Sheet Finisher
48.6" W x 25.5" D x 48.9" H



Shown with Optional DSDP and 3,000 Sheet LCT
23.6" W x 25.5" D x 48.9" H



Color Touch Screen Control Panel
Screen Dimensions: 8.5 inches

HyPAS™

Hybrid Platform for Advanced Solutions

Basic Specifications

Configuration	Black & White Multifunctional Systems - Print/Scan/Copy/Optional Fax
Pages Per Minute	Letter: 42 ppm / Legal: 23 ppm / Ledger: 23 ppm
Warm-up Time	30 Seconds or Less
First Copy / Print Out Time	3.9 Seconds / 4.8 Seconds
Resolution	600 x 600 dpi
Memory / Hard Disk Drive	2 GB RAM / 160 GB HDD
Duplex	Standard Stackless, Statement to Ledger, 16 - 20 lb Bond
Electrical Requirements / Weight	120V, 60Hz, 12A / 187.4 lbs (mainframe only)
Maximum Monthly Volume	150,000 Pages Per Month

Paper Supply

Standard Paper Sources	Dual 500 Sheet Drawers, 200 Sheet MPT; Auto Selection / Switching, Add Paper While Running
Optional Paper Sources	500 x 2 Dual Paper Drawers PF-720(B) ; 3,000 Sheet Large Capacity Tray PF-760(B)
Paper Capacity	Standard: 1,200 Sheets; Maximum: 4,200 Sheets
Paper Size	5.5" x 8.5" - 11" x 17"
Paper Weight	Standard Trays, PF-760(B): 16 - 28 lb Bond; MPT: 12 lb Bond - 110 lb Index; PF-720(B): 16 lb Bond - 90 lb Index
Input Materials	Bond Paper, Recycled Paper, Transparencies, Cardstock, Envelopes

Printer Specifications

Controller	PowerPC 750FL / 600MHz
PDLs/Emulations	PRESCRIBE, PCL6 (6e, XL), KPDL3 (PS3)
Fonts	136 KPDL3, 93 PCL6, 8 Windows Vista, 1 Bitmap
Windows OS Compatibility	Windows 2000/XP/2003/Vista/2008/Windows 7
Novell OS Compatibility	Novell NetWare 3.x/4.x/5.x/6.x
Mac OS Compatibility	Mac OS 10.x
UNIX OS Compatibility	Sun OS 4.1.x; Solaris 2.x; AIX; HP-UX 9(LPR)
Interfaces	Standard: 10/100BaseTX, Hi-Speed USB 2.0, USB Host Interface, 2 Expansion Slots
Network Print and Supported Protocols	TCP/IP (IPv4, IPv6, IPsec, SSL, HTTPS), IPX/SPX, AppleTalk, NetBEUI
Drivers	KX Driver, Mini Driver, KX Driver for XPS, XPS Mini Driver, Network Fax Driver, PPD for Mac
Utilities	PDF Direct Print, KMnet Admin, KMnet for Accounting, KMnet Viewer

Scan Specifications

Scan Resolutions	200, 300, 400, 600 dpi
File Formats	Black: PDF, TIFF; Color: PDF, JPEG, TIFF, XPS
PDF Extension	High Compression PDF, Encrypted PDF
Connectivity / Supported Protocols	10/100BaseTX / TCP/IP
Scanning Functions	Scan to SMB, Scan to e-Mail, Scan to FTP, Scan to USB, WSD Scan, TWAIN Scan

Copy Specifications

Image Mode	Text, Photo, Text/Photo, Auto, Manual, Map
Continuous Copy	1 - 999 / Auto Reset to 1
Additional Features	Positive/Negative Reverse, Mirror Image, Rotate Copy, Border Erase, Split Copy, Electronic Sort, Margin Shift
Job Management	Job Interrupt, Job Build, 10 Job Programs, Repeat Copy, 1,000 Department Codes
Magnification / Zoom	Full Size, 5 Reduction, 5 Enlargement Preset Ratios, 25 - 400% in 1 step increments, XY Zoom
Document Box	Custom Box, Job Box, Removable Memory Box, Fax Box (with optional Fax System)

Fax Specifications

Fax / Network Fax Option	Fax System(S) / Internet Fax Kit(A) (requires Fax System(S))
Compatibility	Super G3 Fax
Fax Memory	Standard: 12 MB; Maximum: 120 MB
Fax Functions	Duplex TX/RX, Confidential RX/TX, F-Code RX/TX, Broadcasting, Fax Box, Fax Block, Dual Fax

Optional Document Processors DP-760(B) or DP-750(B)

Type / Capacity	DP-760(B) Dual Scan Document Processor / 100 Sheets DP-750(B) Reversing Automatic Document Processor / 100 Sheets
DSDP Scan Speed DP-760(B)	Simplex: 75 ipm / Duplex: 100 ipm (300 dpi)
RADF Scan Speed DP-750(B)	Simplex: 75 ipm / Duplex: 45 ipm (300 dpi)
Acceptable Originals/Weights	5.5" x 8.5" - 11" x 17", Mixed Size Originals / 9 - 42 lb Bond

Optional 3,000 Sheet Finisher DF-760(B)

Stack / Staple Capacity	Main Tray: 3,000 Sheets; Sub Tray(B): 200 Sheets; Sub Tray(C): 50 Sheets
Paper Size	Main Tray: 8.5" x 11" - 11" x 17"; Sub Tray(B): 5.5" x 8.5" - 11" x 17"; Sub Tray(C): 8.5" x 11"
Paper Weight	Main Tray: 16 lb Bond - 90 lb Index Duplex; 16 lb Bond - 110 lb Index Simplex; Sub Tray (B/C): 12 lb Bond - 90 lb Index
Edge Staple Position	3 Positions: Top Left, Bottom Left, Center Bind
Optional Multi-Bin Mailbox	MT-720(B) Includes 7 Trays; Supports 16 lb Bond - 90 lb Index Stack Capacity per Bin: 100 Sheets: 5.5" x 8.5", 8.5" x 11"; 50 Sheets: 8.5" x 14", 11" x 17"
Optional Punch	PH-5A 2 and 3 Hole Punch Unit, Supports 8.5" x 11" - 11" x 17", 16 - 110 lb Index
Optional Saddle Stitch / Fold	BF-720 Supports 8.5" x 11", 8.5" x 14", 11" x 17", 16 lb Bond - 110 lb Index; Over 24 lb Bond Single Sheet

Optional 1,000 Sheet Finisher DF-780(B)

Stack / Staple Capacity	1,000 Sheets / 50 Sheets: 8.5" x 11"; 25 Sheets: 8.5" x 14", 11" x 17"
Paper Size / Weight	8.5" x 11" - 11" x 17" / 16 - 34 lb Bond
Edge Staple Position	3 Positions: Top Left, Bottom Left, 2 Point Long Edge

Optional Internal Finisher DF-720(B)

Stack/Staple Capacity	500 Sheets / 30 Sheets: 8.5" x 11"; 20 Sheets: 8.5" x 14", 11" x 17"
Paper Size / Weight	8.5" x 11" - 11" x 17" / 16 - 21 lb Bond
Edge Staple Position	1 Position

Additional Options

KYOcapture, KYOcapture Express, Fax Memory, Platen Cover, Job Separator JS-700(B), Attachment Kit AK-700, Stand, Data Security Kit (E) - Security Overwrite and Encryption for Print/Copy/Scan, Printed Document Guard Kit (A)
--



Specifications and design are subject to change without notice.
For the latest on connectivity visit www.copystar.com.
All trademarks are the property of their respective owners.

Kyocera Mita America, Inc. Headquarters: 225 Sand Road, Fairfield, NJ 07004-0008, USA
©2009 Kyocera Mita America, Inc.
IC# 855D400246

